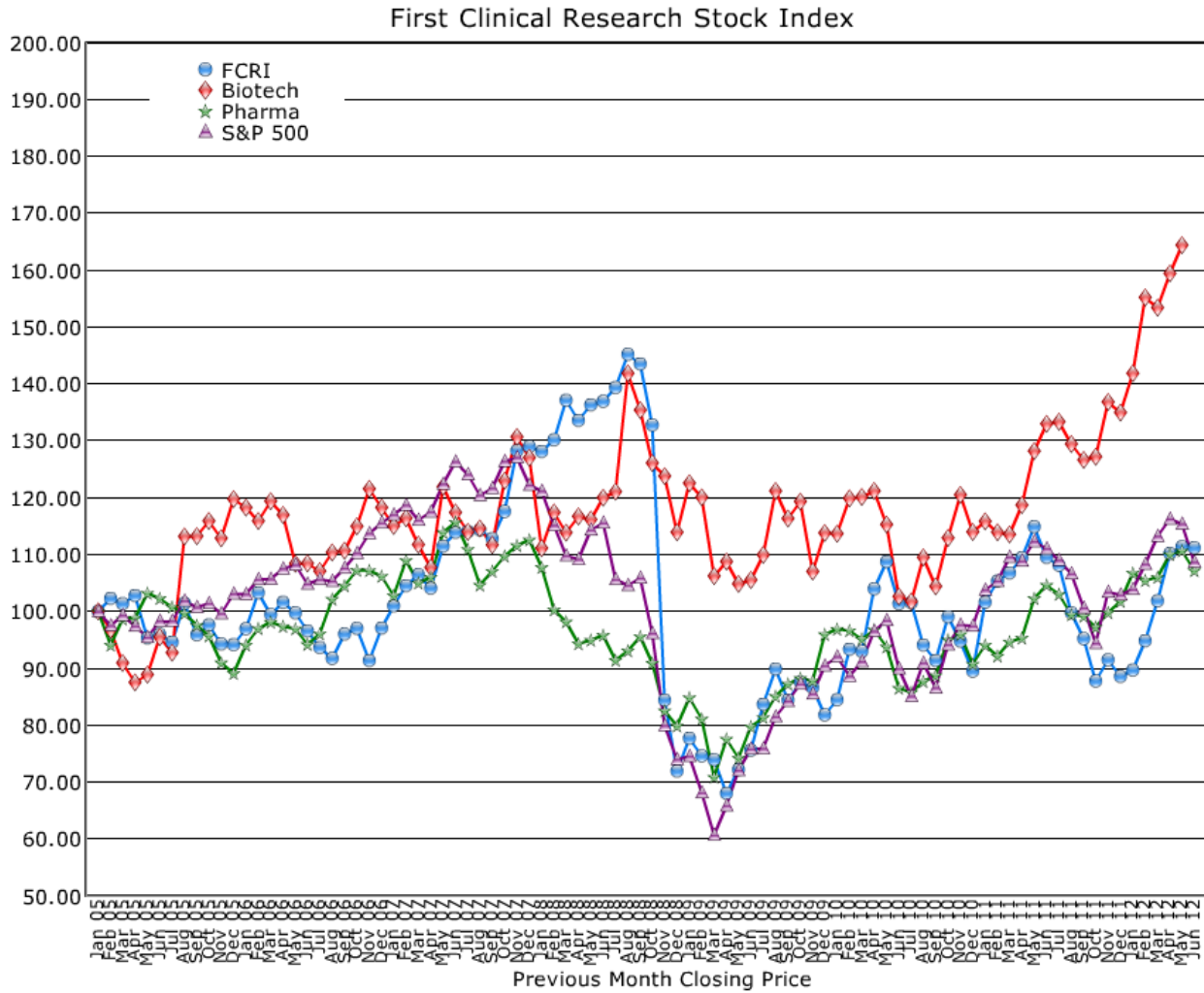


## First Clinical Research Stock Index (FCRI)

### Market Activity

FCRI held flat last month, while pharmas declined 3%, biotechs declined 3%, and the general market declined 6%. Two FCRI stocks gained and six declined. There were no significant gainers. The only significant decliner was CMIC (-11%).



## Notes on Indices

- **First Clinical Research Index (FCRI).** Calculated as the mean average percentage change from baseline, dividends excluded, adjusted for stock splits. In other words, the indices are not weighted for stock price or market capitalization. Prices are in local currencies. Index components may change from time to time based on new listings, mergers and other factors. Components include nine publicly traded clinical research stocks: BioClinica (BIOC:US), CMIC (2309:JP), Covance (CVD:US), Datatrak International (DATA:US), EPS Co., Ltd. (4282:JP), eResearchTechnology (ERES:US), ICON (ICLR:US), Medidata (MDSO:US), and PAREXEL International (PRXL:US).
- **S&P 500 Index (SPX).** Capitalization-weighted representative sample of 500 mostly large-capitalization companies in leading industries of the U.S. economy.
- **S&P 500 Pharmaceutical Index (S5PHARX).** Capitalization-weighted S&P 500 companies engaged in research, development or production of pharmaceuticals.
- **S&P 500 Biotechnology Index (S5BIOTX).** Capitalization-weighted S&P 500 companies primarily involved in development, manufacturing or marketing of products based on advanced biotechnology research.

Stock and index prices are available at <http://www.bloomberg.com/> and <http://finance.yahoo.com/>.